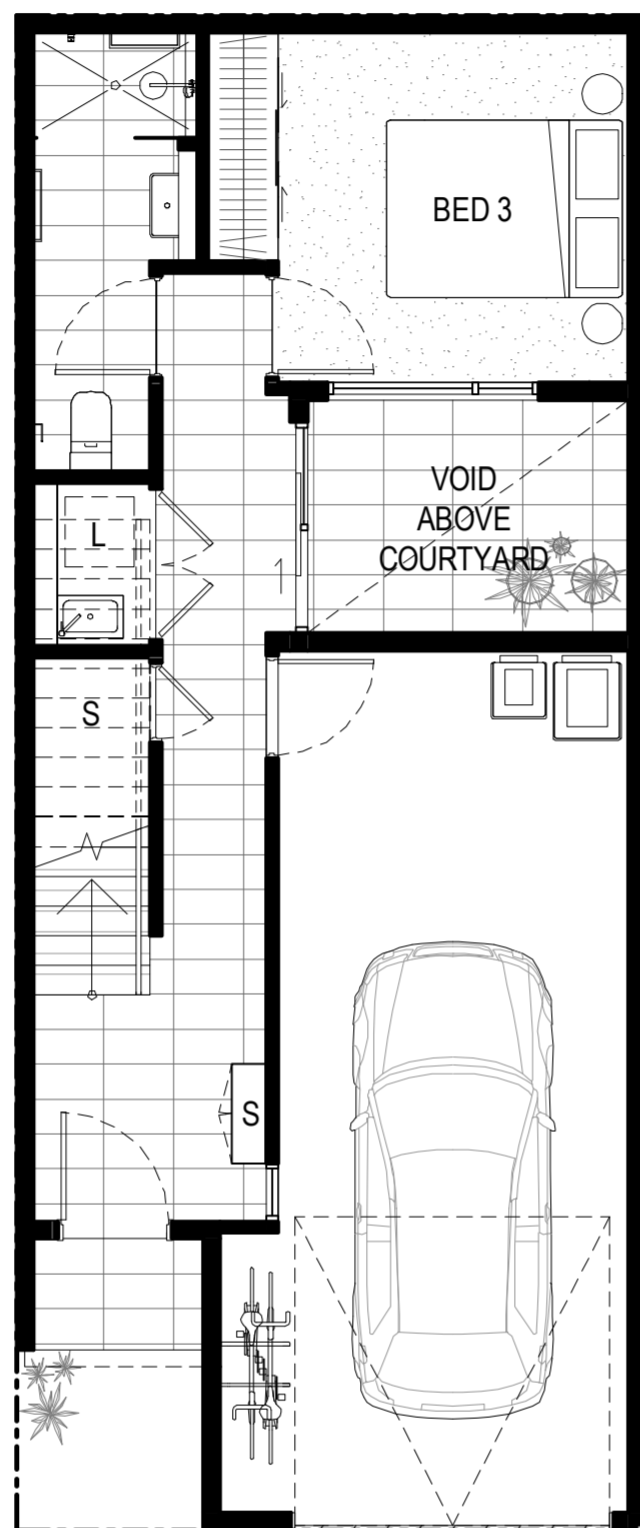
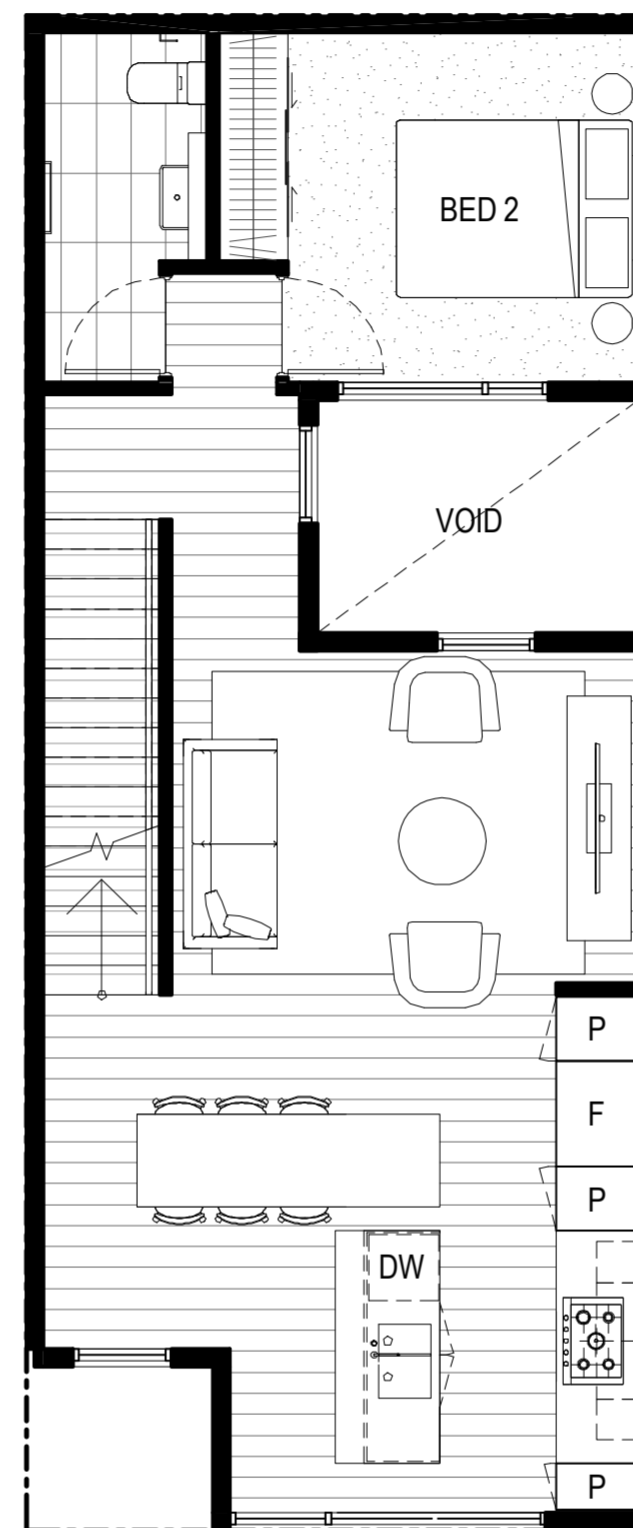


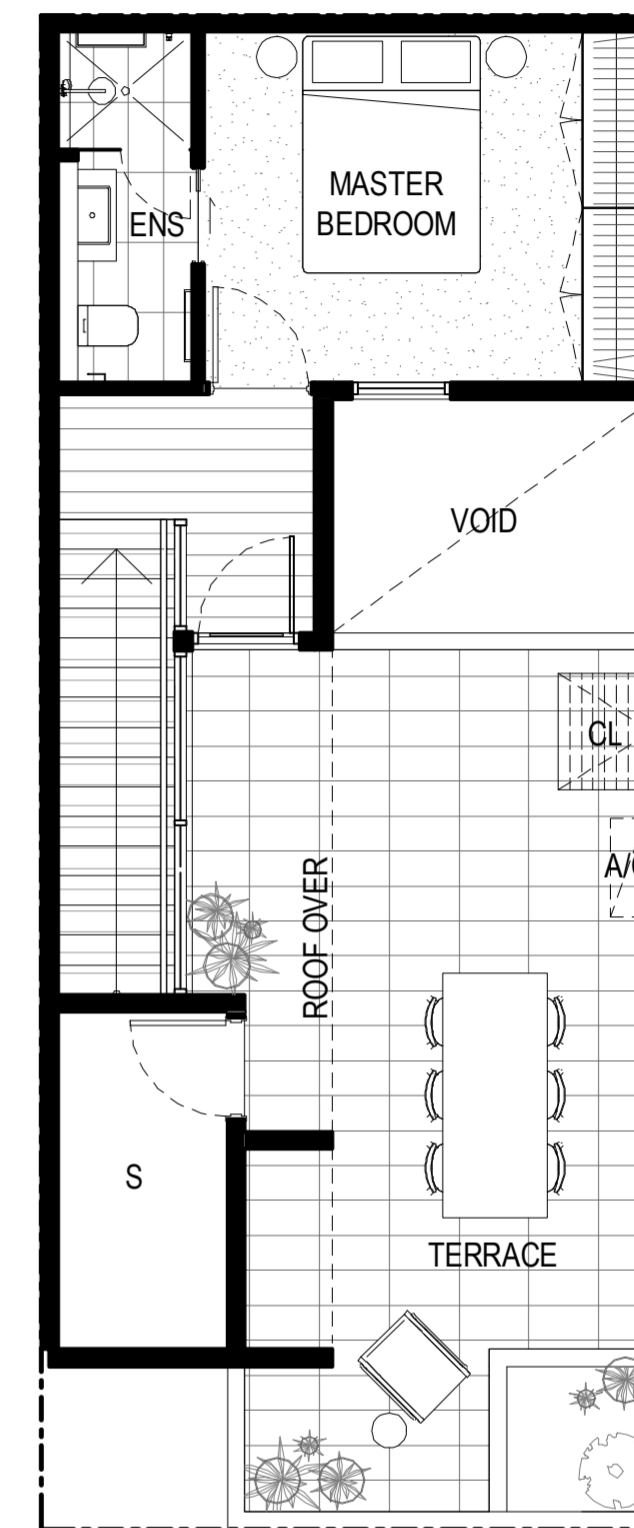
GROUND



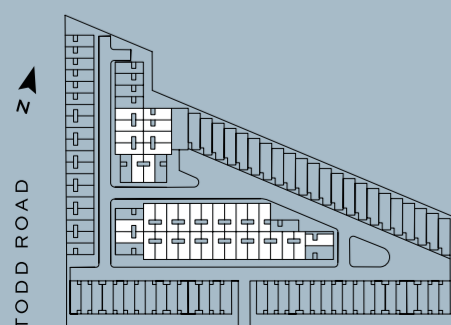
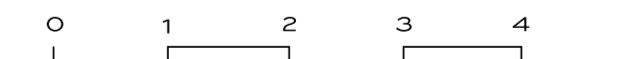
LEVEL 1



LEVEL 2



AC AIR CON. CONDENSER, CL CLOTHES LINE, DW DISHWASHER, F REFRIGERATOR, L LAUNDRY, P PANTRY, S STORAGE



WILLIAMSTOWN ROAD

BED 3
BATH 2.5
CAR 1

GROUND	34.5m ²
LEVEL 1	62.1m ²
LEVEL 2	27.1m ²
TOTAL INTERNAL	123.7m²
GARAGE	25.9m ²
TERRACE	35.1m ²
OPEN SPACE	4.0m ²
COURTYARD	5.8m ²
TOTAL SIZE	194.5m²



rothelowman



Tract

Disclaimer: These plans are intended as a guide only. The dimensions and areas are approximate only and may not accurately represent the actual dimensions and areas of the apartments or the spaces within them and are subject to change without notice. The locations of utilities, fixtures, fittings and extent of floor finishes may vary during construction and are on these plans for illustrative purposes only. Measurements are in accordance with the Property Council of Australia Method of Measurement.

Varying floorplan orientations and mirrored layouts. Please confirm with sales agent.