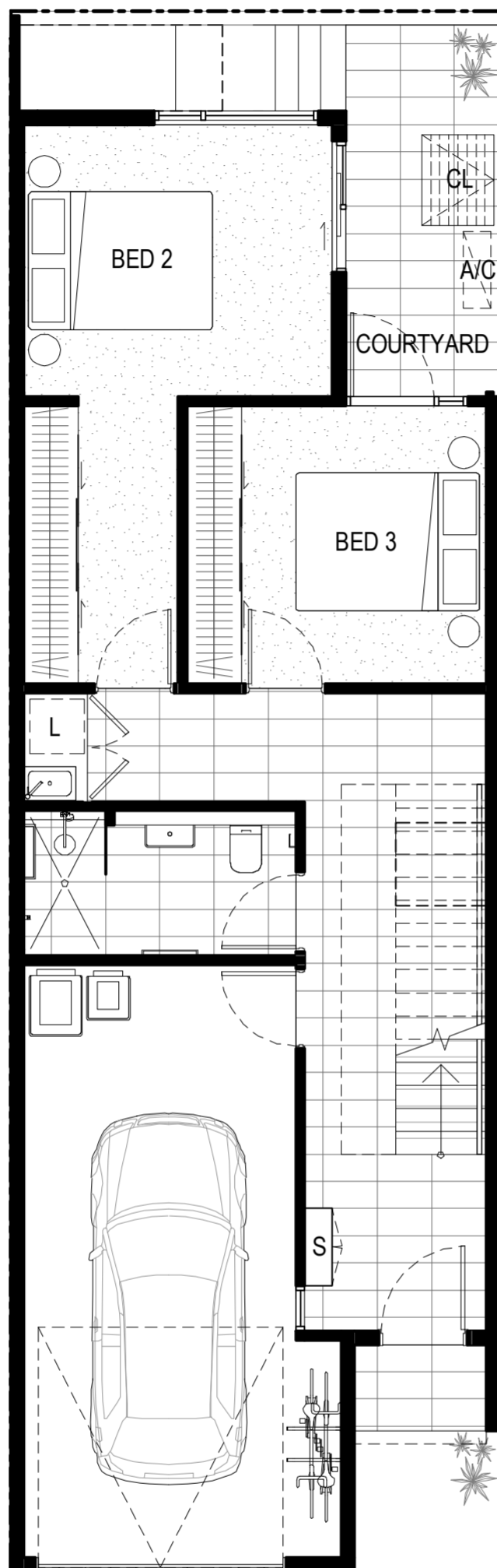
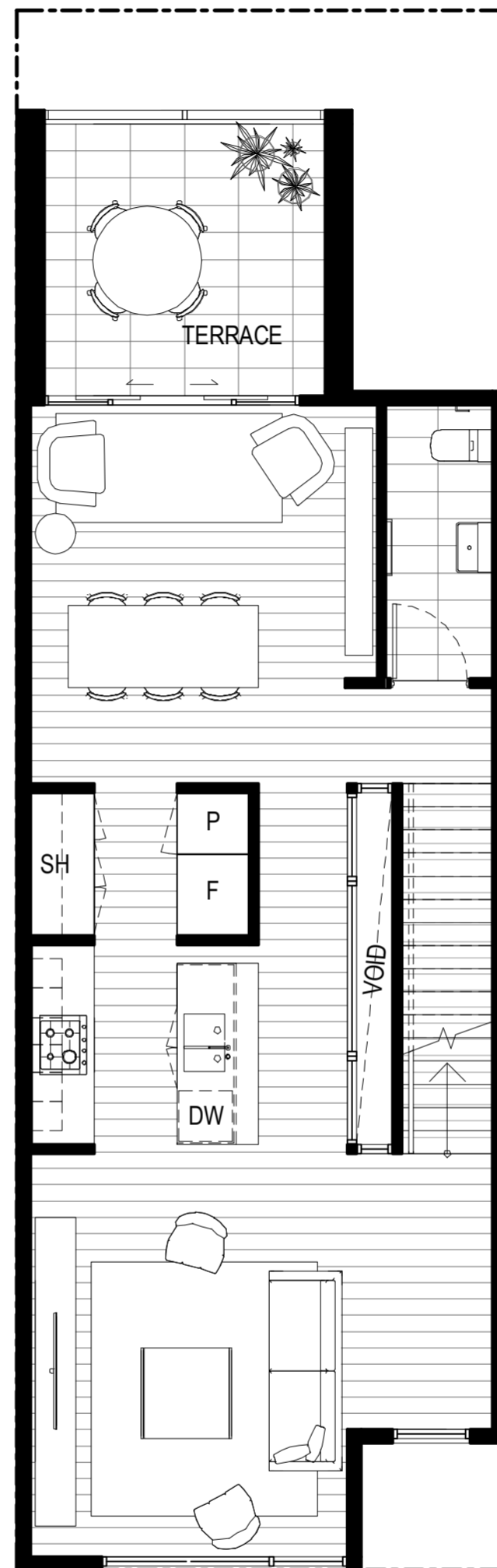


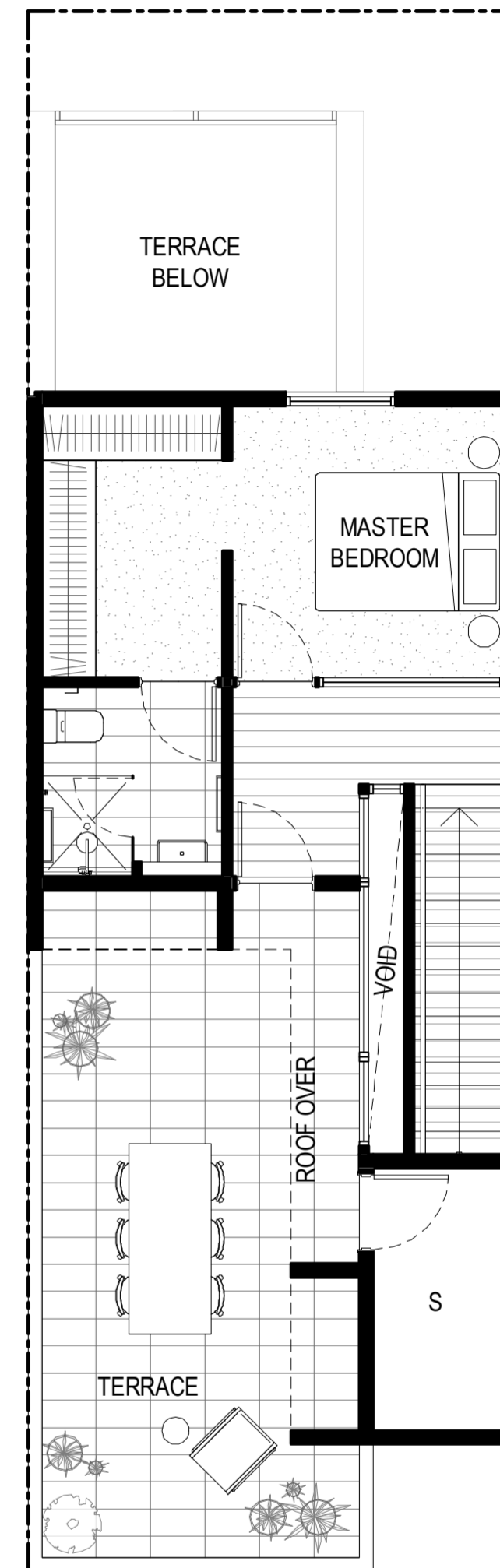
GROUND



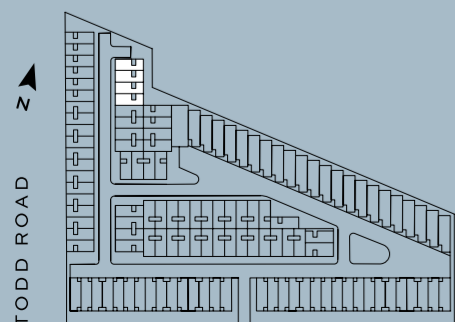
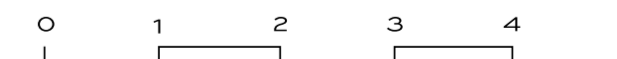
LEVEL 1



LEVEL 2



AC AIR CON. CONDENSER, CL CLOTHES LINE, DW DISHWASHER, F REFRIGERATOR, L LAUNDRY, P PANTRY, S STORAGE, SH SHELVES



WILLIAMSTOWN ROAD

BED 3 BATH 2.5 CAR 1

GROUND	54.9m ²
LEVEL 1	66.2m ²
LEVEL 2	33.3m ²
TOTAL INTERNAL	154.4m²
GARAGE	22.7m ²
TERRACE	44.5m ²
OPEN SPACE	4.0m ²
COURTYARD	11.3m ²
TOTAL SIZE	236.9m²



rothelowman



Tract

Disclaimer: These plans are intended as a guide only. The dimensions and areas are approximate only and may not accurately represent the actual dimensions and areas of the apartments or the spaces within them and are subject to change without notice. The locations of utilities, fixtures, fittings and extent of floor finishes may vary during construction and are on these plans are for illustrative purposes only. Measurements are in accordance with the Property Council of Australia Method of Measurement.

Refer to keyplan for floorplan orientation.